

Overall risk assessment

Roverway 2024

Current version: 2.2
Last updated: 21.04.2024

Rev.	Date of Issue	Release purpose	Approved by
1.0	01.01.2024	First draft	OMB
2.0	08.02.2024	Translated into english	OMB, HKK
2.1	15.03.2024	Readthrough and revision of document in preparation for publishing.	OMB, HKK
2.2	21.04.2024	Updating of impact matrix	OMB, HKK





Table of contents

Table of contents	2
1 Introduction	3
1.1 Assumptions and Limitations	3
2 Grading	4
2.1 Impact matrix	4
2.2 Probability matrix	5
2.3 Risk acceptance	5
A. Events	6
A.1 Event: Acute illness	6
A.2 Event: Blocked emergency corridors during response	7
A.3 Event: Fire in the camp	8
A.4 Event: Power and Telecommunication Breakdown	9
A.5 Event: Extreme Weather	10
A.6 Event: Fall from height	12
A.7 Event: Vandalism	13
A.8 Event: Cuts - Injuries	14
A.9 Event: Food Poisoning	15
A.10 Event: Water Activities	16
A.11 Event: Sexual Harassment	17
A.12 Event: Infectious Diseases	18
A.13 Event: Failure in major constructions	19
A.14 Event: Terrorism, hostage situation, etc.	20
A.15 Event: Traffic Accident	21
A.16 Event: Crowding during stage performance	22
A.17 Event: Theft of equipment	23
A.18 Event: Incident during path	24
A.19 Event: Damaged reputation	25
A.20 Event: Unavailability of health card	26
A.21 Event: Participant goes missing	27
A.22 Event: Contaminated drinking water	28
A.23 Event: Noise	29
A.24 Event: Unwanted/unauthorised people inside the camp	30
A.25 Event: Environmental damage	31





1 Introduction

1.1 Assumptions and Limitations

This analysis is an overarching risk assessment. All activities at the camp have been risk-assessed through the tools that Guides and Scouts use daily in their work. Any activities beyond the usual Guide and Scout work have been assessed for risk using the same standard as this analysis. Numerous measures have been implemented through this process to limit serious incidents.

It is inherent in the nature of the situation that there is a certain risk in gathering nearly 6000 people who will be active throughout nearly two weeks in a leisure activity that is based on providing new challenges and experiences. There will be cuts, falls, and illnesses. As always, thorough preparation, risk analysis, and an emergency plan are effective tools to prevent incidents, to limit and handle them in a good manner.

This risk analysis has been prepared following a template from previous Norwegian national camps.

The Roverway leadership and administration actively participate in the development of the overall risk assessment.





2 Grading

In order to objectively identify risks, a standardised grading system will be used throughout this document. This grading is based on the probability and impact of an adverse effect/event. The categorisation of both impact and probability are given below.

2.1 Impact matrix

The impact of an adverse event/effect is categorised as following:

	Safe	Some danger	Dangerous	Critical	Catastrophe
Life & health	No possible injuries or very light injuries.	Minor injuries.	Many injuries. Possible permanent damage.	Serious injuries requiring prolonged professional care, potentially resulting in permanent damage.	Significant injuries or death.
Economy and equipment	Minor financial loss, extra work, increased costs, or damage to equipment.	Some financial loss, extra work, increased costs, or damage to equipment.	Moderate financial loss, extra work, increased costs, or damage to equipment.	Serious financial loss, extra work, increased costs, or damage to equipment.	Significant financial loss, extra work, increased costs, or damage to equipment.
Reputation	No damage to reputation.	Minor damage to reputation.	Moderately negative impact on reputation.	Serious damage to reputation.	Significant damage to reputation and trust is seriously threatened.





2.2 Probability matrix

The probability of an adverse event/effect happening is categorised as following:

Unlikely	Not happened in recent national scout camps
Less likely	Not every national camp
Likely	Every national camp
Very likely	Several times during the week
Extremely likely	Every day

How to read the risk assessment matrix for each event

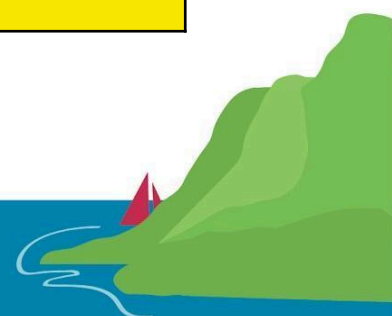
- At the start of the analysis (1st column):
Risk assessment before any mitigations have been made.
- Risk with existing measures (2nd column):
Risk assessment after planned mitigations as of today.
- Risk with new measures: (3rd column): Risk assessment after additional mitigations during the planning process.

2.3 Risk acceptance

The combination of probability and impact of an adverse event/effect have been combined in the following matrix, where the colour green indicates an acceptable risk, yellow indicates an acceptable risk if simple mitigating measures are available and red indicates an unacceptable risk:

	Safe	Some danger	Dangerous	Critical	Catastrophe
Extremely likely	Yellow	Red	Red	Red	Red
Very likely	Green	Yellow	Red	Red	Red
Likely	Green	Green	Yellow	Red	Red
Less likely	Green	Green	Green	Yellow	Red
Unlikely	Green	Green	Green	Green	Yellow

- Acceptable
- Accepted if simple measures are available
- Not acceptable





A. Events

A.1 Event: Acute illness

Description	Cardiac arrest, diabetes, acute illnesses.
-------------	--------------------------------------------

	At the start of the analysis:	Risk with existing measures:	Risk with new measures:
Probability level:	Likely	Likely	Not specified
Consequences:	Critical	Dangerous	Not specified

Causes		
Diabetes		
Heart attack		
etc.		
Consequences		
Death (All consequence areas)		
Hospitalisation (All consequence areas)		
Existing measures	Status	Type
Several scouts trained in CPR	Proposed	Limiting
Everyone in the staff has action-notification cards	Decided	Limiting
Defibrillator – 6 units in the camp, marked on the camp map	Ongoing	Limiting
Plan for evacuation/transportation out	Ongoing	Limiting
New measures	Status	Type





A.2 Event: Blocked emergency corridors during response

Description	Key roads will be blocked to allow emergency services, essential vehicles, and people to pass through.
-------------	--------------------------------------------------------------------------------------------------------

	At the start of the analysis:	Risk with existing measures:	Risk with new measures:
Probability level:	Likely	Likely	Not specified
Consequences:	Dangerous	Some danger	Not specified

Causes		
Incorrectly parked cars		
Misplaced tents/installations		
Crowded areas		
Goods transport		
Consequences		
Help does not arrive on time		
Daily operational activities may be delayed.		
Existing measures	Status	Type
Traffic wardens	Proposed	Preventive
Limited and regulated driving and goods transport	Proposed	Preventive
Good communication with emergency services (Nødnett)	Proposed	Preventive
Inspection before and during the camp	Proposed	Limiting
Action cards/emergency plan	Decided	Limiting
New measures	Status	Type



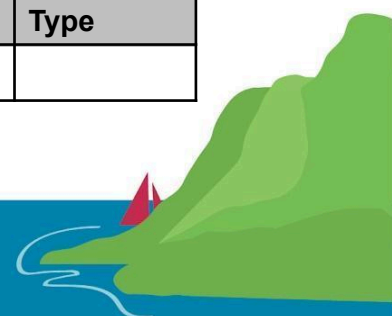


A.3 Event: Fire in the camp

Description	All scouts cook their own food on stoves and/or campfires. Additionally, there is a campfire every evening. These are activities that can lead to fire in the camp to a greater or lesser extent.
-------------	---------------------------------------------------------------------------------------------------------------------------------------------------------------------------------------------------

	At the start of the analysis:	Risk with existing measures:	Risk with new measures:
Probability level:	Likely	Likely	Not specified
Consequences:	Dangerous	Some danger	Not specified

Causes		
Flammable containers, due to storage of grass and flammable liquids.		
Incorrect use of gas stoves		
Lack of firefighting equipment		
Strong wind - too large campfires		
Accumulation of garbage		
Consequences		
Tent fire and loss of property (All consequence areas)		
Personal injuries (All consequence areas)		
Existing measures	Status	Type
Firefighting equipment Everyone should have a bucket of water near all open flames. All tropper should have a fire extinguisher in their area. Common tents, food houses and buildings have at least 1 fire extinguisher.	Proposed	Preventive
Action and notification cards Good communication (radio) within the internal staff. Evacuation instructions.	Proposed	Preventive
Garbage disposal is organised so that flammable materials are not disposed of in the same place as hot ash or other flammable objects.	Proposed	Preventive
Inspections before and during the event	Proposed	Preventive
Designated fire zones regulated on the map	Proposed	Limiting
New measures	Status	Type





A.4 Event: Power and Telecommunication Breakdown

Description	Much of normal operations rely on the use of mobile phones. Loss of power and/or telecommunication may hinder or delay camp activities and also contact with emergency services.
--------------------	----------------------------------------------------------------------------------------------------------------------------------------------------------------------------------

	At the start of the analysis:	Risk with existing measures:	Risk with new measures:
Probability level:	Less likely	Less likely	Not specified
Consequences:	Some danger	Some danger	Not specified

Causes		
Overload		
Power outage		
Consequences		
Accidents cannot be alerted in the "usual" way (All consequence areas)		
Existing measures	Status	Type
Radio All key personnel in normal operations and emergency response have access to radios that does not require mobile networks and power.	Proposed	Preventive
All staff members are marked and can receive a message for further relay to emergency services	Proposed	Preventive
Emergency power supply for HQ. 4G network.	Proposed	Limiting
New measures	Status	Type



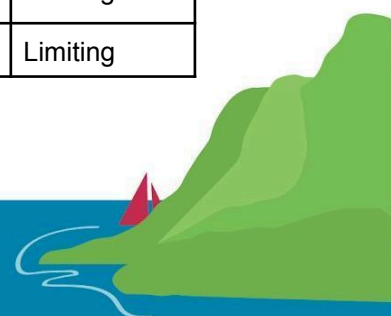


A.5 Event: Extreme Weather

Description	Extreme Weather
-------------	-----------------

	At the start of the analysis:	Risk with existing measures:	Risk with new measures:
Probability level:	Likely	Likely	Not specified
Consequences:	Dangerous	Some danger	Not specified

Causes		
Heavy rain		
Strong winds		
Abnormally hot and dry conditions		
Abnormally cold conditions in combination with wind and precipitation		
Consequences		
General hypothermia (All consequence areas)		
Excessive mud - poor hygiene (All consequence areas)		
Items blowing away, structures collapsing (All consequence areas)		
Heatstroke, dehydration (All consequence areas)		
Increased risk of fire incidents (All consequence areas)		
Existing measures	Status	Type
Bark and gravel on standby to avoid excessive mud	Proposed	Limiting
All tents properly anchored	Proposed	Preventive
Good warning procedures before potential bad weather occurs	Proposed	Preventive
Plan for drying equipment	Proposed	Limiting
Evacuation plan. Full evacuation will occur in collaboration with public authorities.	Proposed	Limiting
Monitoring weather forecasts – communication with municipality and emergency services	Proposed	Limiting
Monitoring system in the municipality. Plumber in case of water and sewage network breaks.	Proposed	Limiting
Rest area for those who are chilled/dehydrated	Proposed	Limiting





New measures	Status	Type





A.6 Event: Fall from height

Description	Fall from height due to work at height. Construction and climbing on structures.
-------------	----------------------------------------------------------------------------------

	At the start of the analysis:	Risk with existing measures:	Risk with new measures:
Probability level:	Very likely	Unlikely	Not specified
Consequences:	Critical	Some danger	Not specified

Causes		
Poor leadership		
Poor planning		
Insufficient protection		
Insufficient training		
Consequences		
Fall injuries, all types (All consequence areas)		
Existing measures	Status	Type
All structures with platforms over 3 metres must be approved by the Safety department	Proposed	Preventive
Responsible leaders are present during construction.	Proposed	Preventive
Everyone is asked to plan what they are going to build - create a model.	Proposed	Preventive
“Everyone” is trained in first aid.	Proposed	Limiting
Action cards in case of accidents.	Proposed	Limiting
Fall protection where necessary.	Proposed	Preventive
New measures	Status	Type





A.7 Event: Vandalism

Description	Vandalism caused by participants, staff or the public.
-------------	--------------------------------------------------------

	At the start of the analysis:	Risk with existing measures:	Risk with new measures:
Probability level:	Unlikely	Unlikely	Not specified
Consequences:	Some danger	Safe	Not specified

Causes		
People with impaired judgement		
People under influence		
Consequences		
Material damage		
Personal injuries (All areas of consequence)		
Existing measures	Status	Type
Awareness through internal staff courses and action cards for all staff	Decided	Preventive
Hosts are aware of the people moving around the area. And follow up if necessary.	Decided	Preventive
New measures	Status	Type





A.8 Event: Cuts - Injuries

Description	Cuts due to cooking or activities. Either with a knife or sharp objects.
-------------	--------------------------------------------------------------------------

	At the start of the analysis:	Risk with existing measures:	Risk with new measures:
Probability level:	Very likely	Very likely	Not specified
Consequences:	Dangerous	Some danger	Not specified

Causes		
Use of knife, axe, and saw		
Consequences		
Cuts (All consequence areas)		
Existing measures	Status	Type
First aid - all Guides and Scouts are first aid trained	Proposed	Limiting
Dedicated first aid station open 24/7 and good collaboration with emergency services	Proposed	Limiting
Wandering patrols equipped with a simple first aid kit.	Decided	Limiting
New measures	Status	Type





A.9 Event: Food Poisoning

Description	Food poisoning due to improper food handling, storage, or preparation methods, leading to the ingestion of contaminated food and subsequent illness.
-------------	------------------------------------------------------------------------------------------------------------------------------------------------------

	At the start of the analysis:	Risk with existing measures:	Risk with new measures:
Probability level:	Likely	Likely	Not specified
Consequences:	Dangerous	Some danger	Not specified

Causes		
Spoiled food due fridges not working, food being left outside for too long, etc.		
Poor hygiene		
Inadequate planning and procedures		
Consequences		
Outbreak of digestive problems		
Dehydration		
Existing measures	Status	Type
Dialogue with food inspection	Proposed	Preventive
Good planning and procedures related to storage and delivery of food.	Proposed	Preventive
Hygiene inspections	Proposed	Preventive
Emphasis on toilets and good washing facilities after toilet visits	Proposed	Preventive
Short storage time for food at distribution	Proposed	Preventive
Procedures for follow-up if 3 or more people get sick in the same area	Proposed	Limiting
New measures	Status	Type





A.10 Event: Water Activities

Description	Person in the water due water/boating activities. This event does not address swimming as this is on every participant's own responsibility.
-------------	----------------------------------------------------------------------------------------------------------------------------------------------

	At the start of the analysis:	Risk with existing measures:	Risk with new measures:
Probability level:	Less likely	Less likely	Not specified
Consequences:	Dangerous	Some danger	Not specified

Causes		
Carelessness		
Impaired capability from cooling due to cold weather/water or bad clothing choices.		
A person falls into the water from a boat or canoe.		
Losing control or capsizing of a boat/canoe due to weather conditions		
Losing control or capsizing of boat/canoe due to skill level		
Consequences		
Drowning (All consequence areas)		
Hypothermia (All consequence areas)		
Existing measures	Status	Type
Use of life jackets when using boats/canoes	Proposed	Limiting
Roverway will not have swimming as an activity. However, there will still be areas designated for swimming. Self-responsibility will be the core principle in this regard.	Proposed	Limiting
Powered boat on standby (where local risk analysis suggests it) 20 canoes per boat.	Proposed	Limiting
No canoe/kayak, paddleboard, etc. activities if the weather forecast indicates more than 10 m/s wind.	Proposed	Preventive
Local conditions and participants' skills are continuously assessed. If necessary, the activity must be stopped.	Proposed	Preventive
New measures	Status	Type





A.11 Event: Sexual Harassment

Description	Sexual harassment against a participant or staff member at Roverway. Inflicted by another participant or other individuals.
-------------	-----------------------------------------------------------------------------------------------------------------------------

	At the start of the analysis:	Risk with existing measures:	Risk with new measures:
Probability level:	Likely	Likely	Not specified
Consequences:	Some danger	Some danger	Not specified

Causes		
Old issues resurface		
Unstable individuals		
Cultural differences on acceptable behaviour		
Rumours		
Consequences		
Mental challenges such as anxiety, depression, low self-esteem		
Breakdown		
Suicidal thoughts		
Existing measures	Status	Type
Good procedures and collaboration with health and the police for handling	Proposed	Limiting
Good follow-up of the offended person	Proposed	Limiting
Everyone follows RW's safe from harm routines. All participants and staff are required to complete a digital safe from harm course before the camp starts.	Proposed	Preventive
Whistleblowing procedures, e.g., poster in toilets.	Proposed	Preventive
Listening ear team available all day.	Proposed	Limiting
New measures	Status	Type





A.12 Event: Infectious Diseases

Description	Infectious diseases spread among participants at Roverway.
-------------	------------------------------------------------------------

	At the start of the analysis:	Risk with existing measures:	Risk with new measures:
Probability level:	Likely	Less likely	Not specified
Consequences:	Dangerous	Some danger	Not specified

Causes		
An infectious disease is brought into the camp - e.g noroviruses or meningitis.		
Poor sanitation		
Consequences		
Illness (All consequence areas)		
Multiple infected or sick individuals		
Existing measures	Status	Type
Effective notification procedures if there is suspicion	Proposed	Limiting
Isolation planning.	Proposed	Limiting
Separate food points or hand washing stations	Proposed	Preventive
Good communication with the infection control responsible in the municipality	Proposed	Limiting
Good routines for hand wash before eating and receiving food.	Proposed	Preventive
New measures	Status	Type





A.13 Event: Failure in major constructions

Description	At Roverway, there will be several large structures such as tents, stages, and portals.
-------------	-----------------------------------------------------------------------------------------

	At the start of the analysis:	Risk with existing measures:	Risk with new measures:
Probability level:	Less likely	Unlikely	Not specified
Consequences:	Dangerous	Some danger	Not specified

Causes		
Extreme weather		
Excessive load		
Construction failure		
Procedural failure during assembly/disassembly		
Consequences		
Personal injuries (All areas of consequence)		
Material damages. Which can further contribute to personal injuries. Property damage. (All areas of consequence)		
Existing measures	Status	Type
Documented HSE from suppliers	Proposed	Limiting
Good security. Prevent participants or others from committing vandalism or affecting the structures.	Proposed	Limiting
All planned structures higher than 5m must be approved by the Service department. There should be a plan for execution, construction, and security. Local risk assessment. Approval from Service in collaboration with Safety should be given when the construction is completed.	Proposed	Limiting
Blocking off areas during the construction of major structures.	Proposed	Limiting
New measures	Status	Type





A.14 Event: Terrorism, hostage situation, etc.

Description	Terrorism, hostage situation, etc.
-------------	------------------------------------

	At the start of the analysis:	Risk with existing measures:	Risk with new measures:
Probability level:	Unlikely	Unlikely	Not specified
Consequences:	Critical	Dangerous	Not specified

Causes		
Unstable individuals		
Pre-planned terrorism by organised people/groups.		
Consequences		
Trauma		
Personal injury (All areas of consequence)		
Mental trauma		
Reputation damage		
Existing measures	Status	Type
Emergency organisation and good dialogue with the police	Underway	Preventive
Police contact.	Proposed	Preventive/ Limiting
Evacuation plan. Stage 2 evacuation. According to the contingency plan in cooperation with public authorities and the police.	Proposed	Limiting
This is not a political event.	Decided	Preventive
New measures	Status	Type





A.15 Event: Traffic Accident

Description	Traffic accidents related to transportation of participants between activities and paths. Reception of buses and traffic flow in the camp area.
-------------	-------------------------------------------------------------------------------------------------------------------------------------------------

	At the start of the analysis:	Risk with existing measures:	Risk with new measures:
Probability level:	Likely	Unlikely	Not specified
Consequences:	Dangerous	Dangerous	Not specified

Causes		
Violation of traffic rules		
Poor planning and management of reception of buses and traffic flow in the camp area.		
Inadequate supervision		
Mixing of traffic flows (vehicles on the same path as pedestrians)		
Poor visibility		
Poorly trained/instructed heavy vehicle operators		
Consequences		
Personal injuries (All consequence areas)		
Potentially significant material damage		
Existing measures	Status	Type
Own plans for entry and exit.	Decided	Preventive
Traffic plan with additional traffic safety measures	Decided	Preventive
No reversing of trucks without a person acting as a spotter	Proposed	Preventive
Only use of vehicles in the camp area if the alternative significantly worsens the performance of the task. (External individuals who reside in the camping area are allowed to drive to their property)	Proposed	Preventive
All cars must have a valid authorization clearly visible in the windscreen and a driving map.	Ongoing	Preventive
Planning team and responsible leaders are aware of which drivers are operating cars and other vehicles	Proposed	Preventive
New measures	Status	Type





A.16 Event: Crowding during stage performance

Description	Large crowds might gather at the front of the stage, creating congestion. Ingress and egress to the ceremonies.
-------------	-----------------------------------------------------------------------------------------------------------------

	At the start of the analysis:	Risk with existing measures:	Risk with new measures:
Probability level:	Likely	Less likely	Not specified
Consequences:	Dangerous	Some danger	Not specified

Causes		
Many attendees		
Popular artists		
Consequences		
Crush injuries		
Existing measures	Status	Type
Partition the audience. Maintain clear paths.	Proposed	Preventive
Trained hosts that will inform the audience of the safety plans before and during the ceremonies.	Proposed	Preventive
Outsiders stand in a designated area behind the Guides & Scouts.	Proposed	Preventive
Organised entry and exit march.	Proposed	Limiting
New measures	Status	Type





A.17 Event: Theft of equipment

Description	There will be an open campsite area. There will be a lot of equipment and items such as camp gear and personal belongings. Participants and staff are in large parts responsible for their own equipment.
-------------	-----------------------------------------------------------------------------------------------------------------------------------------------------------------------------------------------------------

	At the start of the analysis:	Risk with existing measures:	Risk with new measures:
Probability level:	Very likely	Likely	Not specified
Consequences:	Safe	Safe	Not specified

Causes		
A lot of tempting equipment easily accessible		
Money handling in retail outlets		
Consequences		
Economic		
Theft of identity documents		
Existing measures	Status	Type
Expensive camp equipment that cannot be locked or removed when not in use must be guarded by the responsible department.	Proposed	Preventive
There will be regular patrols.	Proposed	Preventive
Insurance where necessary.	Proposed	Preventive
Encourage everyone to take good care of valuable items and identity documents.	Proposed	Preventive
New measures	Status	Type





A.18 Event: Incident during path

Description	Injury or accident during path.
-------------	---------------------------------

	At the start of the analysis:	Risk with existing measures:	Risk with new measures:
Probability level:	Unlikely	Unlikely	Not specified
Consequences:	Dangerous	Some danger	Not specified

Causes		
An accident takes place during the path		
Consequences		
Personal injuries (All areas of consequence)		
Existing measures	Status	Type
Different levels of trips based on the Guides and Scouts' experience.	Proposed	Preventive
Thorough risk assessments have been conducted for all paths.	Decided	Preventive
Norway there is an operational safety and rescue network all over the place for everyone	Decided	Limtering
Simple warning procedures.	Proposed	Preventive
Have clear alternative plans for those who do not meet the requirements and prerequisites to participate.	Proposed	Preventive
For paths that require specific equipment, both personal and group. Have something in backup or ensure in advance that everyone is prepared.	Proposed	Preventive
Notify FORF, the municipality, and the local scout district in advance. Evaluate who is necessary.	Proposed	Preventive
New measures	Status	Type





A.19 Event: Damaged reputation

Description	Damaged reputation to the scouting movement in general, but primarily the reputation of Norwegian scouting
-------------	------------------------------------------------------------------------------------------------------------

	At the start of the analysis:	Risk with existing measures:	Risk with new measures:
Probability level:	Unlikely	Unlikely	Not specified
Consequences:	Dangerous	Some danger	Not specified

Causes		
Serious incidents		
Poor handling		
Failure in procedures		
Poor internal and external communication		
Consequences		
Weakened reputation of the camp		
Weakened reputation of the Guides and Scouts in general, and the Guides and Scouts of Norway specifically		
Critical media coverage		
Existing measures	Status	Type
Emergency organisation.	Decided	Preventive
Roverway has a dedicated Crisis Communications Team.	Decided	Preventive
Training in realistic situations.	Decided	Preventive
Close dialogue with the Guides and Scouts of Norway Board and WAGGS and WOSM in case of incidents.	Decided	Preventive
Established HQ as an operations and emergency centre.	Decided	Preventive
Communication department manages all contact with the media.	Decided	Preventive
New measures	Status	Type





A.20 Event: Unavailability of health card

Description	We have health cards for all participants, but in acute cases, there is a risk that we may not have them available.
--------------------	---------------------------------------------------------------------------------------------------------------------

	At the start of the analysis:	Risk with existing measures:	Risk with new measures:
Probability level:	Likely	Unlikely	Not specified
Consequences:	Some danger	Some danger	Not specified

Causes		
Lost/inaccessible due to IT-problems		
Expectation that we are aware of the health situation of participants and staff.		
Persons with access are unavailable or take a long time to find the correct information.		
Consequences		
Incorrect treatment if first responders do not have access to health cards.		
Incorrect treatment was administered.		
Health cards will not be available to all practitioners.		
We create an expectation that we can provide treatment based on health cards; failure can lead to damage to reputation.		
Existing measures	Status	Type
Informing about our procedures. Participant expectations	Decided	Preventive
Cards or bracelets showing their own critical allergies, etc. Which everyone carries with them at all times.	Proposed	Preventive
When in doubt: contact the camp doctor	Decided	Reducing
Established HQ as an operational and emergency centre	Decided	Preventive
New measures	Status	Type





A.21 Event: Participant goes missing

Description	Participant goes missing during a path or activity.
-------------	-----------------------------------------------------

	At the start of the analysis:	Risk with existing measures:	Risk with new measures:
Probability level:	Very likely	Likely	Not specified
Consequences:	Dangerous	Some danger	Not specified

Causes		
Participant gets separated from the patrol/path		
Participant goes missing during activity/ hike		
Causes could be bad weather or low visibility.		
Unclear instructions		
Difficult/confusing terrain		
Lack of navigational skill		
Consequences		
Search for the missing person.		
Personal injuries (All consequence areas)		
Existing measures	Status	Type
Different levels of hikes/ activities based on the experience of the Guides and Scouts	Proposed	Preventive
Simple notification procedures	Proposed	Limiting
Maps and trips planned by locals	Proposed	Preventive
Keep track of all participants during movement	Proposed	Preventive
Action card specific for this event.	Decided	Limiting
If the weather suggests there's a risk of a participant getting separated from the group or the group getting lost, the plan needs to be reassessed or cancelled.	Proposed	Preventive
New measures	Status	Type





A.22 Event: Contaminated drinking water

Description	Contaminated drinking water
-------------	-----------------------------

	At the start of the analysis:	Risk with existing measures:	Risk with new measures:
Probability level:	Unlikely	Unlikely	Not specified
Consequences:	Dangerous	Some danger	Not specified

Causes		
Emission of harmful liquids such as fuel, etc.		
Break in water supply		
Failure in procedures		
Consequences		
Disease (all areas of consequence)		
Risk of infection		
Dehydration		
Existing measures	Status	Type
Water supply from the municipal water network	Proposed	Preventive
Drinking water stored in suitable, closed containers	Proposed	Preventive
The municipality has water trucks on standby	Proposed	Preventive
Rest area for isolating patients. This will be an area where individuals can be quarantined. But also for individuals to stay if they are not fit to be at the campsite.	Proposed	Limiting
Proper handling of "dirty water"	Proposed	Preventive
No toothbrushing, washing, etc. at drinking water stations	Proposed	Preventive
Reserve drinking water	Proposed	Limiting
New measures	Status	Type





A.23 Event: Noise

Description	Noise caused by activities and participants at Roverway.
-------------	----------------------------------------------------------

	At the start of the analysis:	Risk with existing measures:	Risk with new measures:
Probability level:	Likely	Unlikely	Not specified
Consequences:	Some danger	Safe	Not specified

Causes		
Activity in the camp outside normal sleeping hours (23:00 – 06:00)		
Activity outside the camp outside normal sleeping hours (23:00 – 06:00)		
Consequences		
Disturbs the general population during normal sleeping hours.		
Complaints from neighbours (reputation challenges)		
Neighbours take matters into their own hands to get rid of noise from the camp.		
Existing measures	Status	Type
Own information sheet to neighbours	Proposed	Preventive
Police informed about events with noise after 23:00	Proposed	Preventive
Work to ensure that the media make a case so that as many people as possible are informed.	Proposed	Preventive
No use of personal speakers during quiet hours.	Proposed	Preventive
New measures	Status	Type





A.24 Event: Unwanted/unauthorised people inside the camp

Description	Unwanted/unauthorised people inside the camp. The campsite is open to the public.
-------------	-----------------------------------------------------------------------------------

	At the start of the analysis:	Risk with existing measures:	Risk with new measures:
Probability level:	Extremely likely	Very likely	Not specified
Consequences:	Safe	Safe	Not specified

Causes		
Open camp area.		
It's a popular hiking area.		
Buildings around and inside the camp area.		
Consequences		
Unwanted behaviour by visitors and outsiders. Behaving threateningly or similarly.		
Safety of participants.		
Reputation of the Guides and Scouts might be harmed due to unwanted behaviour not directly committed/instigated by internal participants or staff.		
Existing measures	Status	Type
Info sheet to neighbours	Proposed	Preventive
Guards at main entrances	Proposed	Reducing
No access for unauthorised vehicles	Proposed	Preventive
New measures	Status	Type





A.25 Event: Environmental damage

Description	Damage to the environment, whether it's littering, emissions, or destruction of nature.
-------------	-----------------------------------------------------------------------------------------

	At the start of the analysis:	Risk with existing measures:	Risk with new measures:
Probability level:	Likely	Less likely	Not specified
Consequences:	Some danger	Some danger	Not specified

Causes		
Garbage is left behind or ends up in the wrong place.		
Emissions into nature such as sewage, runoff, etc.		
Excavation in the soil, and muddy trails.		
Trees are being cut down.		
Disturbance of wildlife.		
Consequences		
Destruction of nature and loss of biodiversity.		
Harm to the environment.		
Existing measures	Status	Type
Trash is sorted at the source and many trash bins are placed.	Proposed	Preventive
Sewage is connected to proper facilities.	Proposed	Preventive
Sufficient toilets are provided in the campsite area.	Proposed	Preventive
Roads are repaired, and preventive measures are taken if heavy rainfall is forecasted.	Proposed	Preventive
As a principle, trees should not be cut, and rocks should not be moved.	Proposed	Preventive
New measures	Status	Type





Roverway 2024 - North of the Ordinary:
E-mail: roverway@kmspeider.no
Website: roverway.no

Guides and Scouts of Norway:
Phone: +47 22991550
Website: Kmspeider.no and Speiding.no

